

The Reason for a Flower by Ruth Heller (1983)

Activities

Meets the following standards of the Pennsylvania Department of Education:

English Language Arts

- CC.1.3 – Reading Literature
- CC.1.1.K.C
- CC.1.5.1E

Science and Technology and Engineering Education

- 3.1.K.A3
- 3.1.1.A5
- 3.1.1.B1



The Reason for a Flower introduces children to flowers, their pollinators, and their seeds. It explains, in rhyme, that the reason for flowers is to attract pollinators and to create new seeds. The book is appropriate for children in kindergarten through fourth grade. All the activities can be used with all ages with some adaptations. Activity suggested age group & materials needed:

Butterfly Maze

- Kindergarten – 2nd grade
- Materials: pencils, crayons/markers

Flower Puzzle

- Kindergarten – 3rd grade
- Materials: scissors, card stock

Pollinators and Seeds

- Kindergarten – 4th grade
- Materials: pencil, crayons/markers

Parts of a Flower

- 2nd grade – 4th grade
- Materials: pencils

Flower Rhymes

- 2nd grade – 4th grade
- Materials: pencils

Design a Seed

- Kindergarten – 4th grade
- Materials: pencils, crayons/markers

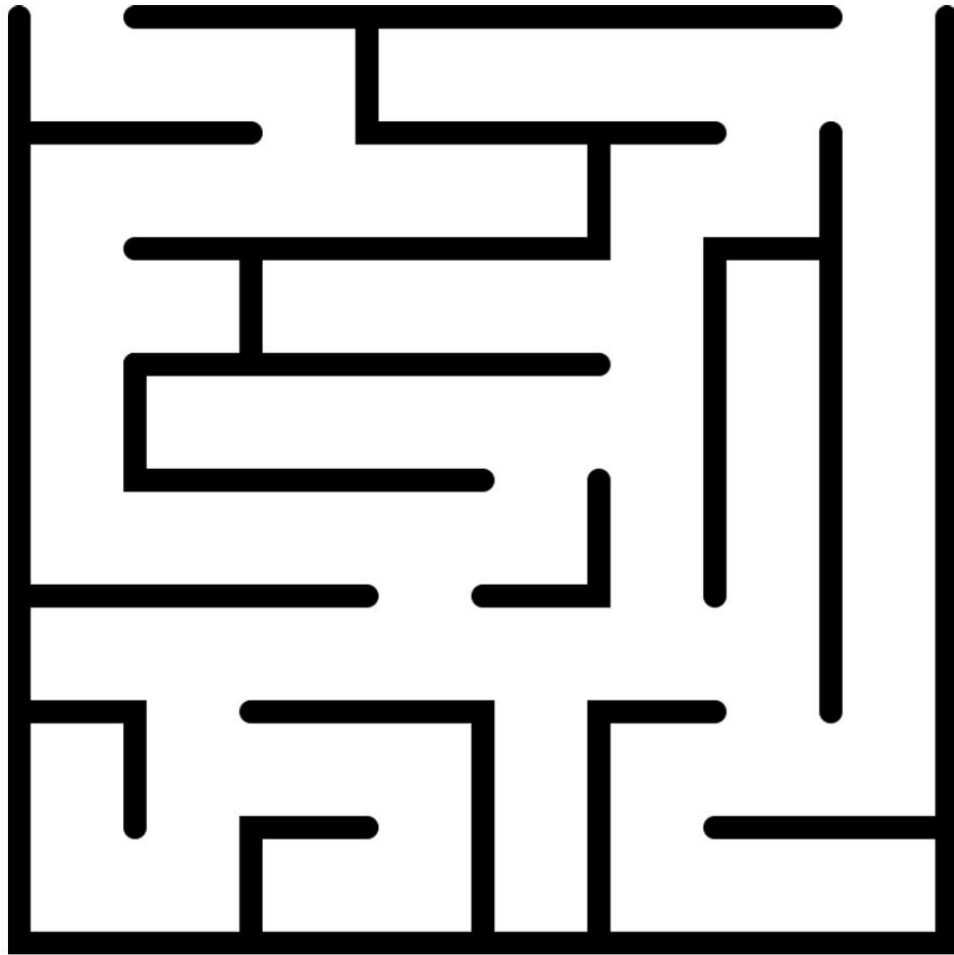
Grass Head – Take Home Activity

- Kindergarten – 4th grade
- Materials: grass seeds, soil, clear cup, water, markers, scissors, arts & crafts supplies



Butterfly Maze

Help the butterfly pollinate the flower!



Flower Puzzle

Cut along the lines to create this flower jigsaw puzzle.

Hint: For best result print on thick card stock paper.



Community Read
Read. Think. Engage.

Pollinators and Seeds

Explore your yard or garden for pollinators. How many can you find? Draw a picture or write about them here.

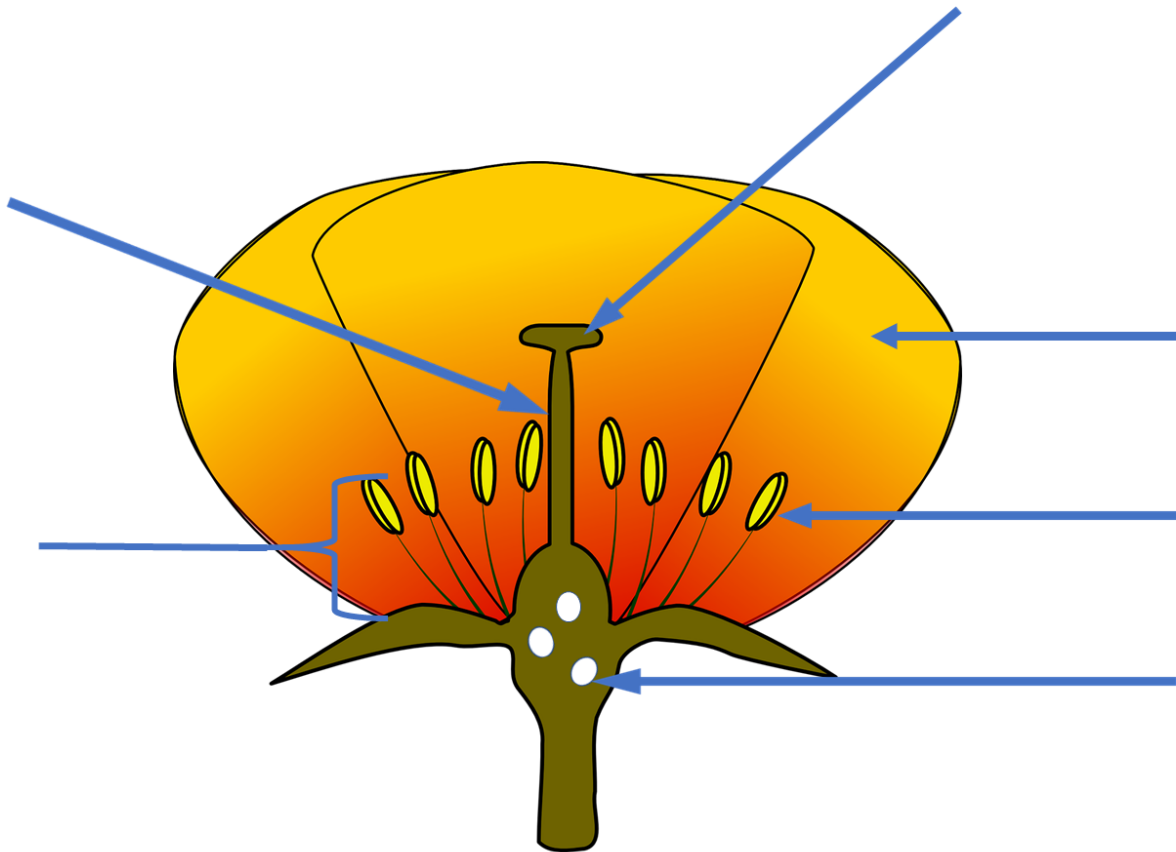


What did you eat today? Did it contain any seeds? Draw a picture or write about them here.



Parts of a Flower

Label the flower parts: anther, stamen, stigma, style, petal, seeds.



Anther - Pollen containers at the top of the stamen.

Stamen - The part of the flower that produces pollen.

Stigma - The area where pollen is received.

Style - The stalk that holds up the stigma.

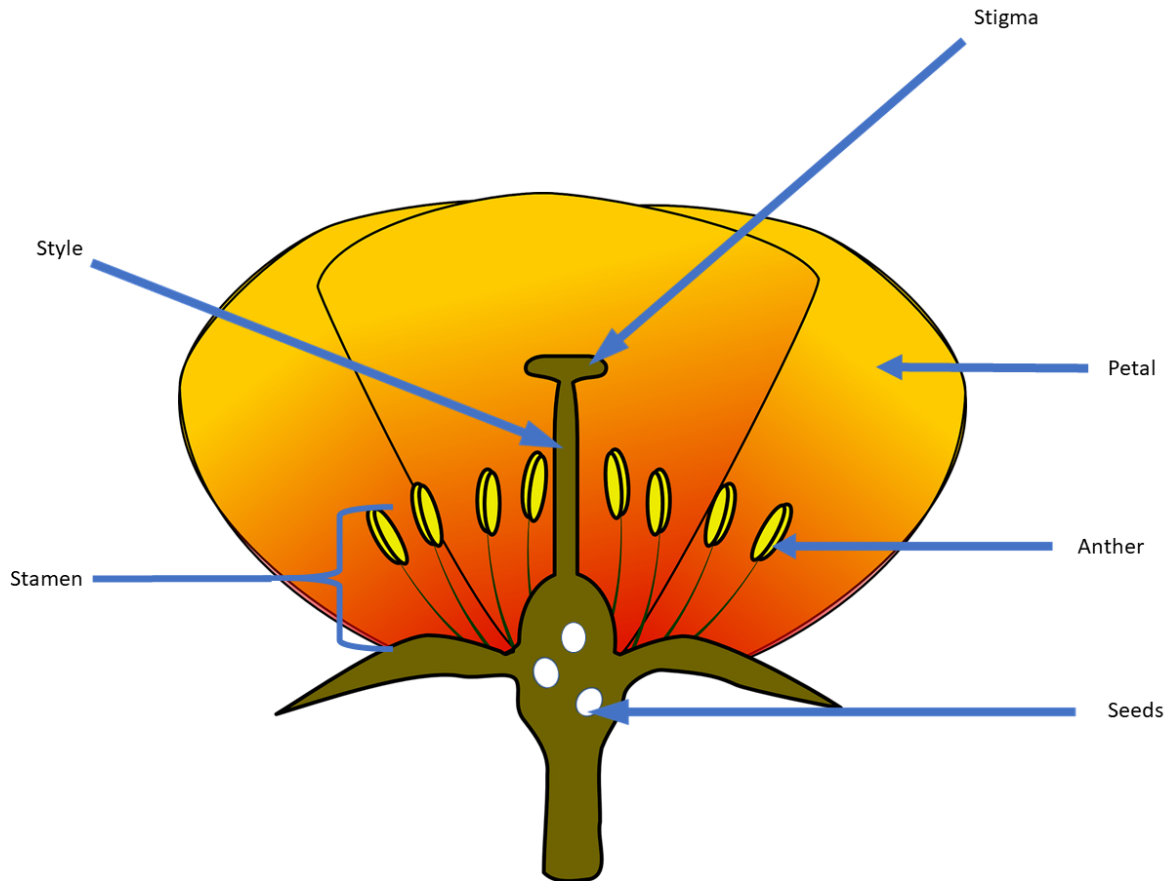
Petal - The bright colorful leaves of the flower. They are often bright and colorful in order to attract insects that help with pollination.

Seeds - A plant embryo (a baby plant, food to feed it, and a coating to protect it are inside).



Answer Key - Parts of a Flower

Label the flower parts: anther, stamen, stigma, style, petal, seeds.



Anther - Pollen containers at the top of the stamen.

Stamen - The part of the flower that produces pollen.

Stigma - The area where pollen is received.

Style - The stalk that holds up the stigma.

Petal - The bright colorful leaves of the flower. They are often bright and colorful in order to attract insects that help with pollination.

Seeds - A plant embryo (a baby plant, food to feed it, and a coating to protect it are inside).



Flower Rhymes

The Reason for a Flower is written in rhyme. Find a rhyming word for each flower listed below. There is a word bank if you need it!



Daisy –

Tulip –

Rose –

Bluebell –

Poppy –

Carnation –

Lily –

Chrysanthemum –

Aster –

Marigold -

Daffodil –

Word Bank

Drum	Faster	Floppy
Fold	Frill	Lazy
Nose	Silly	Slip
Station	Swell	

Use one or two of your rhyming pairs to write and illustrate a silly sentence.
Ex. The giant **sunflower** was squeezed into a tiny **shower**.



Design a New Seed

- Draw your seed in the first box.
- Decide how your seed will travel (wind, water, animal, person). Draw that in the next box.
- Draw the plant that will grow from your seed in the last box.

Your New Seed

How Your Seed Will Travel

Your New Plant



Grass Head

Suggested at Home Activity – Grass seed cup craft

Materials Needed:



- grass seeds
- potting soil
- clear cup
- water
- markers
- scissors
- arts and craft supplies

Directions:

- Draw a silly face on the cup with markers or using craft supplies.
- Fill cup $\frac{3}{4}$ full with potting soil.
- Sprinkle grass seeds and cover with thin layer of soil.
- Water and place in a sunny spot.
- Water daily and watch for “green hair”!
- Trim “hair” as needed.

